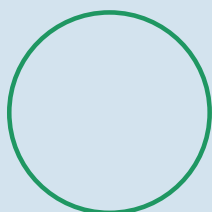


2024-2025  
PROGRAM

THE PARAMOUNT THEATER

# ARTS EDUCATION

GOODNIGHT MOON & THE RUNAWAY BUNNY  
MALEVO ★ CIRQUE KALABANTÉ  
MY FATHER'S DRAGON  
THE GRUFFALO'S CHILD  
HERO: THE BOY FROM TROY  
UNDERNEATH A MAGICAL MOON  
A YEAR WITH FROG AND TOAD  
MOMIX: ALICE ★ LOOK BOTH WAYS



215 East Main Street, Charlottesville, VA 22902

# REGISTRATION & RESOURCES

Scan the QR code below or visit [theparamount.net/education](https://theparamount.net/education) for easy access to information about:

**How to register**

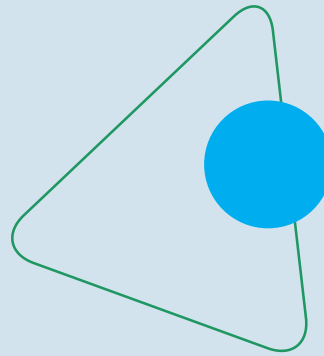
**Pricing & deadlines**

**Program resources**

to share with students before & after each performance

**Show day details**

like directions, parking, and theater etiquette



**SCAN ME!**



**Registration opens on Monday, August 19.**

Advance reservations are required.  
Tickets are \$8.50 for students and adults.  
Financial assistance is available.  
All programs are 60 minutes unless otherwise noted.

## QUESTIONS?

### **Program**

Cathy von Storch, *Education & Outreach Manager*  
434-293-1000 | [cathyvonstorch@theparamount.net](mailto:cathyvonstorch@theparamount.net)

### **Registration/Payment**

434-979-1333  
[boxoffice@theparamount.net](mailto:boxoffice@theparamount.net)



# CHARLOTTESVILLE'S LARGEST CLASSROOM FOR THE PERFORMING ARTS

*"The Paramount is a safe space that welcomes all regardless of race, class, ability, gender, or any other label that might separate us. I feel proud to play a role in bringing our students to experience the arts in this context and hopeful that we are planting the seeds for the future."*

**Aaron Eichorst**

Coordinator of Fine & Performing Arts,  
Charlottesville City Schools

*"The Paramount provides opportunities for students to connect their experience of performing arts events to their learning in the classroom, to one another, and to the fabric of our community. There is no comparison to the joy and energy that children share when attending these events together and in a space that holds such cultural history."*

**Dama Schneider**

Curriculum Coordinator, Visual and Performing Arts,  
Albemarle County Public Schools

*"Thank you for helping us see the show. My favorite parts were standing up and dancing, and learning so much. In general, it was not great, but it was PERFECT. I didn't like it but I LOVED IT!!!!"*

**3rd Grade Student**

Trailblazer Elementary School

**2024-2025**

## Arts Education Season

The Paramount believes that a **passion for the performing arts begins at an early age**. We are committed to presenting the finest arts education performances for area school children. The support and generosity of our Arts Education partners allow The Paramount to make these programs **accessible to ALL Children** in Central Virginia by offering performances at a reduced cost of free of charge.

The Mission of The Paramount Theater Arts Education Program is to **foster appreciation, understanding, and love of the performing arts**. The Arts Education Program provides the opportunity for all students to experience live performing arts in the beautifully restored historic Paramount Theater.

Mermaid Theatre of Nova Scotia

# GOODNIGHT MOON & THE RUNAWAY BUNNY

**\*Monday, October 7  
10:15AM and 12:15PM**

GRADES PRE-K – 2



Adapted from Margaret Wise Brown's seventy-five year old classic, *Goodnight Moon* is a celebration of familiar nighttime rituals, while *The Runaway Bunny's* pretend tale of leaving home evokes reassuring responses from his loving mum. Both feature the endearing animal puppets, stunning scenic effects and evocative music that have earned international recognition for Mermaid Theatre. This sweet double-bill brings a fresh appreciation of the stories and images that have delighted several generations.

Early Learning and Development Connections to APL 2, APL 3, SED 2, SED 3, CLLD 1, CD 2, CD 4; SOL Connections to *English* (Strand: Oral Language): K.1 a, b, c, d, K.3, K.4 b, K.8, K.9, 1.1, 1.2 a, 1.3 a, b, c, 1.4 a, 2.2 a, 2.3 d; SOL Connections to *Science*: K.6, K.7, 1.5, 2.4 a; SOL Connections to *Fine Arts* (Music): K.1 b, 1.1 c, 2.1 c; (Theater Arts): L2.1, L3.1, L4.1, SED2, CLLD1.1, CLLD 1.2, K.1, K.2, K.3, K.4, K.11, 1.3, 1.4, 1.7, 1.11, 2.3, 2.5; (Visual Arts): K.1, 1.1, 2.1; Curriculum Connections to the concepts of a realistic bedtime story and ritual; poetry and nursery rhymes; creating an atmosphere of peace and calm; call and response; emerging independence; unconditional love.

**\*PUBLIC PERFORMANCE:  
Sunday, October 6, 4:00PM**

**Sponsored by:  
Sheila H. McCarthy**



# MALEVO: THE ARGENTINIAN MALAMBO SENSATIONS

**\*Wednesday, October 16  
10:30AM**

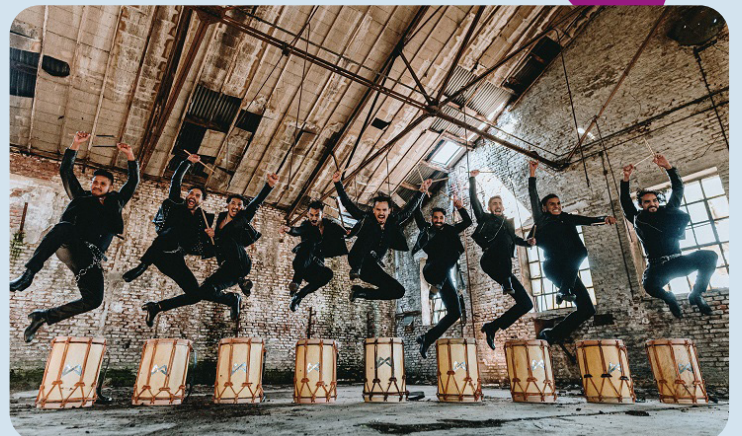
GRADES 6 & UP

MALEVO – the “South American Sensation” – is an all-male group elevating Malambo (the traditional folk dance of Argentine Gauchos) with live urban percussion and dance. Testing strength, dexterity and agility, elements of flamenco, tango and Irish step dance meet and the result is a performance that not only pushes the Malambo style beyond its limits but gives audiences an extraordinary visual and sensory theatrical experience. Named an official "Cultural Ambassador to the National Identity of Argentina," MALEVO has earned international acclaim and were semi-finalists on *America's Got Talent*.

SOL Connections to *History and Social Science*: USII.9 c, d, CE 4 b, WG. 1 e, WG 6 a, d; SOL Connections to *Fine Arts* (Dance Arts): 6.3 a, 6.4, 6.5, 6.6, 6.7, 7.3, 7.6, 7.11, 8.6; (Music): MCI 6 b, MCAD.6, MCB. 7; Curriculum Connections to the concepts of geography – Argentina, West Africa, North America, Ireland, Spain; “malambo”; enslaved West Africans; percussive dance forms; regional differences of “malambo” defined by character of the music; elements of “malambo” dance; dance, as universal, requires body, action, space, time, and effort.

**\*PUBLIC PERFORMANCE:  
Tuesday, October 15, 7:30PM**

**Sponsored by:  
Mary Jae Abbitt**





## CIRQUE KALABANTÉ (AFRIQUE EN CIRQUE)

**\*Friday, November 15  
10:30AM**

GRADES 3 & UP

*Afrique en Cirque* is a show by Yamoussa Bangoura, inspired by daily life in Guinea. This performance shares the beauty, youth and artistry of African culture. A colorful show beyond its scenery, costumes and staging, it makes any theatre vibrate with energy and represents the strength, agility and life's joys of young Africans. World-class acrobats execute gravity-defying moves and human pyramids, accompanied by the contemporary sounds of live Afro-Jazz, percussion, and kora. Welcome to the universe of Kalabanté Productions and prepare for an unforgettable journey.

SOL Connections to *English* (Strand: Communication): 3.1 e, 4.1 b, f, 4.4 e, 5.1 a, 6.6 b, 7.6 a, 8.5 l; SOL Connections to *History and Social Science*: 3.5 a, 3.6 a, 3.7, 3.13, VS. 3, VS. 4, USI. 4 c, WG 6 d; SOL Connections to *Fine Arts*: 3.3, 3.5, 4.3, 4.4, 5.6, 5.7, 6.4, 6.6 b, 6.7, 7.4, 7.6, 8.6, 8.13, 8.14; Curriculum Connections to the concepts of circus life; daily life and culture in Guinea; artistic traditions and celebrations from diverse cultures using percussion, dance, and/or song; creating, communicating, and documenting through the arts; discipline, strength, courage, and resilience; movement through dance, acrobatics, and circus arts.

**\*PUBLIC PERFORMANCE:  
Friday, November 15, 7:30PM**

Enchantment Theatre Company

## MY FATHER'S DRAGON

**\*Friday, November 22  
10:15AM and 12:15PM**

GRADES K – 4

A beloved Newbery Honor book comes to life in this charming tale about a resourceful boy named Elmer. Join him as he sets off on a daring adventure to rescue a baby dragon held captive by the ferocious animals of Wild Island. With pluck and ingenuity, Elmer makes his way to the island, outwits the wild animals, and saves Boris, the baby dragon. But can they find their way back home? They travel over the ocean, get lost in a storm, and discover a magical island. Finally, the dauntless duo safely returns home! Enchantment Theatre brings Elmer's marvelous quest to the stage using puppets, masks, magical scenic effects, and original music.

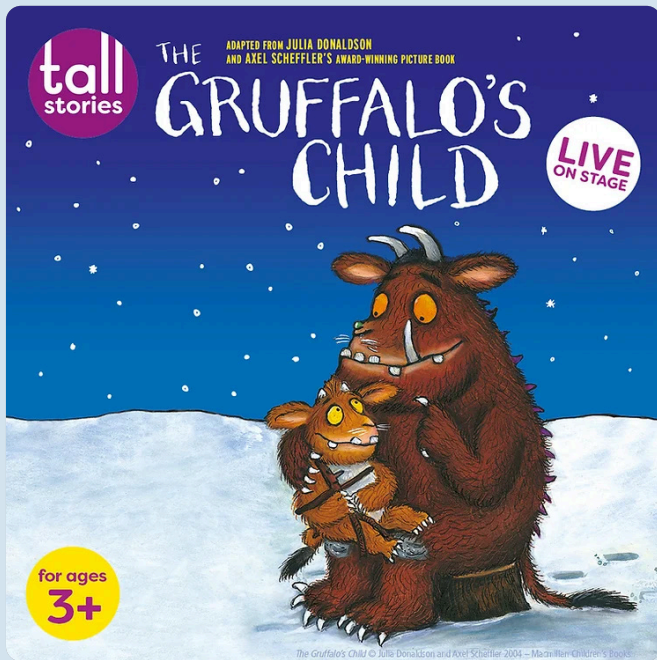
SOL Connections to *English*: K.1 a, b, c, K.2, K.8 a, K.9 e, f, g, K.12, 1.1 b, c, d, 1.8 c, 1.9 d, f, g, h, 2.2 a, 2.3 a, b, c, d, 2.8 a, 3.5 d, e, h, i, j, 4.1 b, c, d, 4.5; SOL Connections to *Science*: K.1 a, K.7, K.9, 1.1 a, 1.5, 2.1 a, 2.4, 2.5, 2.7, 3.1 a, 4.2 b; SOL Connections to *Fine Arts* (Visual Arts): K.1, K.14, 1.1, 1.14, 2.1, 2.14, 3.1, 3.15, 4.1, 4.15; Curriculum Connections to the concepts of imagination; creativity and problem-solving; courage and bravery; ingenuity; adventure; adaptation; compare and contrast; music to define characters, setting, and mood; mythical, wild and domestic animals; good, evil, and justice.

**\*PUBLIC PERFORMANCE:  
Friday, November 22, 6:00PM**



Sponsored by:





Tall Stories Theatre Company of London, England

## THE GRUFFALO'S CHILD

**\*Monday, January 27**  
**10:15AM and 12:15PM**

GRADES PRE-K – 3

Join the Gruffalo's Child on her brave adventure in Tall Stories' enchanting adaptation of the much-loved picture book by Julia Donaldson and Axel Scheffler. One wild and windy night the Gruffalo's Child ignores her father's warnings about the Big Bad Mouse and tiptoes out into the night. She follows snowy tracks and encounters all sorts of woodland creatures, including a debonair snake, eccentric owl, and a cunning fox. Showcasing Tall Stories' distinctive style of physical storytelling, this lively performance combines humor with catchy original music, puppetry, and a touch of magic.

Early Learning and Development Connections: APL2, APL3, APL4, SED1, 1.2, 1.3, SED 2.2, 2.3, 2.4, SED 3.4, CLLD; SOL Connections to *English*: K.1 a, K.2 a, K.8, 1.1, 1.2, 1.3 a, b, c, 1.4 a, 1.7, 1.9 d, e, f, g, h, 2.1 a, b, 2.2 a, 2.7, 2.8 a, b, c, f, g, h, 2.10, 3.1 a, c, 3.5; SOL Connections to *Fine Arts* (Visual Arts): K.1, 1.1, 2.1, 3.1; Curriculum Connections to the concepts of adaptation; imagination; rhyme, meter, and repetition; personification; predators and prey; fables and morale; patience and understanding.

**\*PUBLIC PERFORMANCE:**  
**Sunday, January 26, 4:00PM**

**Sponsored by:**  
**Sheila H. McCarthy**

First Woman, from New York, New York

## HERO: THE BOY FROM TROY

### A NEW MUSICAL ABOUT YOUNG JOHN LEWIS

**Monday, February 10**  
**10:15AM and 12:15PM**

GRADES 3 & UP



Jayden is stuck in detention with a book about Congressman John Lewis, but he thinks that history has nothing to teach him. Together we go on a musical journey through the decades that shows how the heroes in the Civil Rights movement inspired young John Lewis to protest injustice and get into 'good trouble'. As a boy, John dreams of being a preacher who can help others. While he doesn't have a congregation yet, he does have a loyal group of singing chickens that listen to him as he finds his voice. On a harrowing road trip through the South, John's eyes and mind are opened to injustices of segregation and racism that inspire him to take action. As John meets Rosa Parks and Dr. King and ultimately becomes a leader and American hero himself, Jayden learns how he too can take a stand.

SOL Connections to *English*: 3.1, 3.4 f, 4.1, 4.5 a, 5.1, 5.9, 6.1, 6.6, 7.1, 7.6; SOL Connections to *History and Social Science*: 3.1, 3.11, 3.12, 3.13, VS.1 d, e, f, g, h, i, USI.1 c, d, e, f, g, USII.1 b, c, d, e, f, g, USII.3. a, b, CE.1 d, e, f, CE.2 a, CE.3, CE.4; SOL Connections to *Fine Arts* (Music): 6.4, 7.4, 8.4, HM.4; Curriculum Connections to the concepts of the Civil Rights Movement; segregation, racism, injustice, and discrimination; leader and hero; activism and activist; protest through sit-ins, Freedom Rides, and Marches; preservation through the National Museum of African American History and Culture; Social Emotional Learning.



Tutti Frutti and York Theatre Royal  
from Leeds, England

## UNDERNEATH A MAGICAL MOON

**Wednesday, February 19**  
**10:15AM and 12:15PM**

GRADES K – 4

A reimagining of Peter Pan as told by Wendy Darling... Wendy gazes out at the night sky dreaming of blue lagoons, magical moons and most of all, stories. And tonight, there's magic in the air. Fly with Wendy and her brothers as they create the world of Neverland, where time stands still and the impossible seems possible. Even everyday objects become extraordinary under the magical moon. A sparkling new production written by international award winning writer Mike Kenny, scored with exquisite live music and songs, enthralling movement, and a sprinkle of fairy dust.

SOL Connections to *English*: K.1, K.2, K.7 a, b, c, d 1.1 a, b, c, d, 1.2, 1.9 f, g, 2.1, 2.2, 2.7, 3.1, 3.5, 4.1, 4.5 a, b, c, d, e, f; SOL Connections to *Science*: K.8, K.9, 1.6, 4.6; SOL Connections to *Fine Arts (Music)*: K.4, 1.4, 2.4, 3.4; (Theatre Arts): K.1, K.3, 1.1, 1.3, 2.1, 2.3, 3.1, 3.3, 4.1, 4.3; Curriculum Connections to the concepts of imagination and adventure through imaginative play; friendships and relationships; self-esteem, aspirations; what it means to become a grownup; the moon and its phases; compare and contrast, past and present, a well-known story and its modern adaptation.

Wishing Star Productions, LLC

## A YEAR WITH FROG AND TOAD

**\*Thursday, March 27**  
**10:15AM and 12:15 PM**

GRADES PRE-K – 3

Based on Arnold Lobel's beloved children's books and featuring a hummable score by Robert and Willie Reale that bubbles with melody and wit, this whimsical musical follows two great friends — the cheerful, popular Frog and the curmudgeonly Toad — through four, fun-filled seasons, meeting new friends and learning life lessons along the way. The two best friends celebrate and rejoice in their differences that make them unique and special. Part vaudeville, part make believe, all charm, *A Year With Frog And Toad* tells the story of a friendship that endures, weathering all seasons.

Early Learning and Development Connections to L.1, L.2, L.3, SED 2, SED 3, CLLD1, CD 1.1, CD 2, CD4.2, CD 4.3, CD 4.4; SOL Connections to *English*: K.1, K.2, 1.1, 1.2 b, c, d, 1.7 a, b, 2.1, 2.7, 3.1, 3.5; SOL Connections to *Science*: K.1 a, K.7, K.9, K.10, 1.1 a, 1.4, 1.5, 1.7, 2.1 a, 2.4, 2.5, 2.7, 3.1 a, b, 3.4, 3.5, 3.8 a; SOL Connections to *Math*: K.9, 1.9, 2.9, 2.10, 3.10; Curriculum Connections to the concepts of similarities and differences in relationships; life-long learning; personification; realism and fantasy, two literary genres; life cycle of a plant; weather and seasons of the year.

**\*PUBLIC PERFORMANCE:**  
**Thursday, March 27, 6:00PM**



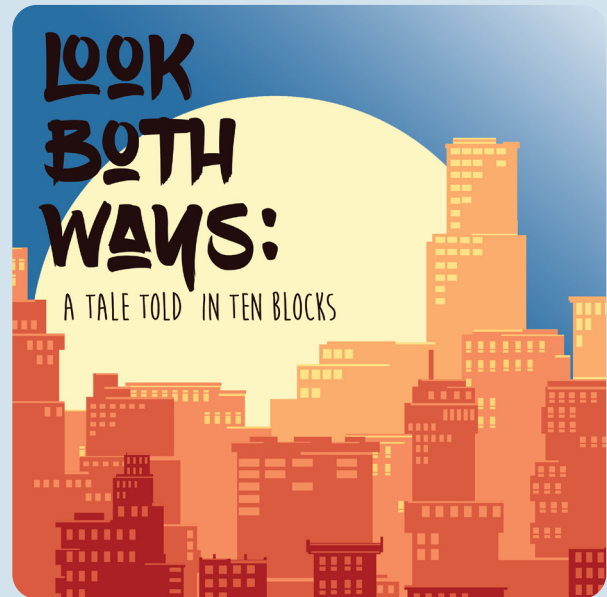
**Sponsored by:**  
**Sheila H. McCarthy**

# MOMIX: ALICE

\*Wednesday, April 9

10:30AM

GRADES 6 & UP



Kennedy Center Theatre for  
Young Audiences on Tour

## LOOK BOTH WAYS: A TALE TOLD IN TEN BLOCKS

Tuesday, April 29

10:15AM and 12:15PM (65 Minutes)

GRADES 5 & UP

This story was going to begin like all the best stories. With a school bus falling from the sky. But no one saw it happen—they were all too busy. *New York Times* best-selling author Jason Reynolds conjures 10 tales (1 per block) about what happens after the dismissal bell rings. 10 blocks. 10 unique tales. There's something for everyone across these 10 vignettes about identity, compassion, fear, and friendship — as told through puppetry, dance, music, projections, audience participation, kamishibai (paper theater), and more. This faithful stage adaptation of Reynolds' award-winning book encourages audiences to look both ways not only when crossing the street, but also when acknowledging the people walking by.

SOL Connections to *English*: 5.1, 5.2, 5.5, 6.1, 6.5, 7.1, 7.6 d, e, f, g, h, 8.1, 8.3 a, b, c, d, 8.5 a, b, 9.1 c, g, i, k 10.1 h, i, j, k 11.1 d, e 12.1 f; SOL Connections to *Fine Arts* (Theatre Arts): 6.1, 6.2, 6.3 a, b, 6.4, 7.3 a, b, c, 7.4, 8.1, 8.3 a, b, c, d, 8.4, T1.3 a, b, c, T11.3 a, T11.4, T1V.4, T1.11; (Visual Arts): 6.12, 6.16, 7.12, 7.16, 8.12, 8.16, A1.8, A11.8, A111.8, A1.11; Curriculum Connections to the concepts of friendship and the meaning of life; stereotypes; change through imagination, creativity, and connection; power of determination and centrality of humor; hope, "shooting for the moon"; unsung heroes; Social Emotional Learning.

Travel down the rabbit hole MOMIX-style with renowned choreographer Moses Pendleton's newest creation, *ALICE*, inspired by Lewis Carroll's *Alice in Wonderland*. Known internationally for presenting works of exceptional inventiveness and physical beauty, MOMIX is a company of dancer-illusionists. Join them on a mind-bending adventure, as Alice encounters time-honored characters including the undulating Caterpillar, a lobster quadrille, frenzied White Rabbits, a mad Queen of Hearts, and a variety of other surprises! Seamlessly blending illusion, acrobatics, magic, and whimsy, *ALICE* is an invitation to invent, to let imagination run and play outside, revealing that nothing in MOMIX's world is as it seems!

SOL Connections to *English*: 6.1, 6.2, 6.5 a, b, c, d, h, 7.1, 7.5 a, b, c, d, g, 8.1 f, 8.5 a, b, d, h, 9.1 g, 10.1 h, 11.1e, 11.4 f, g, h, 12.1 f, 12.4 e; SOL Connections to *Fine Arts* (Dance Arts): 6.4, 7.4, 8.4, D1.4, D11.4; (General Music): 6.5, 7.5, 8.5, HM.5; (Theatre Arts): 6.1, 6.2, 6.3, 7.1, 7.2, 7.3, 8.1, 8.3 a, b, c, d, T1.3 a, b, T11.3 a, b; Curriculum Connections to the concepts of dance as a performing art; the five elements of dance; dancer-illusionists who create magical images/movements by combining dance, acrobatics, costuming and props, dance theater, and symbolism; MOMIX – a tension between illusion and reality, apprehension and excitement.

\*PUBLIC PERFORMANCE:  
Wednesday, April 9, 7:30PM

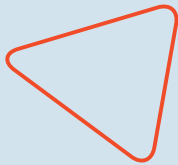
Sponsored in part by:  
**Virginia Cenedella**



# THANK YOU TO OUR ARTS EDUCATION PARTNERS

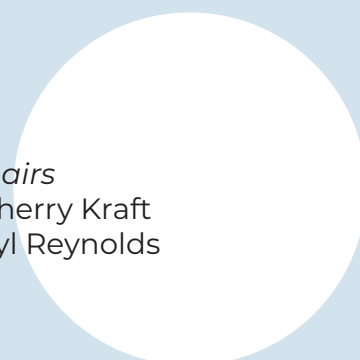
Our Arts Education Partners have made it possible for over 230,103 students and teachers from all over Central Virginia to attend live performing arts at The Paramount Theater since 2004. The Paramount believes that performing arts are an essential part of every child's education, and we know that as students enter this historic Theater, for many it is their first exposure to live theater, a powerful human experience that can be life changing and one they all deserve to know. To ensure ALL students are able to attend a performance, EVERY ticket is subsidized by the generosity of our Arts Education Partners.

Please consider joining us!



## 2024-25 ARTS EDUCATION COMMITTEE MEMBERS:

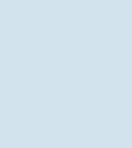
Mary Jae Abbitt & Sheldon Anderson, *Co-Chairs*  
Lisa Cogswell · Ardee Dimberg · Amanda Jones · Sherry Kraft  
Liz Licht · Kathy Mallory-Watson Betty Phelan · Karyl Reynolds  
Cathy von Storch, *Staff Liaison*



## PRESENTING SPONSOR OF THE 2024-25 ARTS EDUCATION SEASON



## 2024-25 ARTS EDUCATION SEASON SPONSOR



MARQUEE SPONSOR



PRODUCER MARQUEE  
SPONSOR



PRODUCER SPONSOR



GRANT SUPPORT FROM



Box Office: 215 East Main Street, Charlottesville, VA 22902  
Mon-Fri 10AM to 2PM | [theparamount.net](http://theparamount.net)